

MDT 809

POTAIN[®]
by **Manitowoc**



Radius Group imited
Mainland House, Gladstone
Close, Northampton,
NN5 7AY

Tel: +44 (0)1604 62 28 65
info@radiusgroup.co.uk

MDT 809

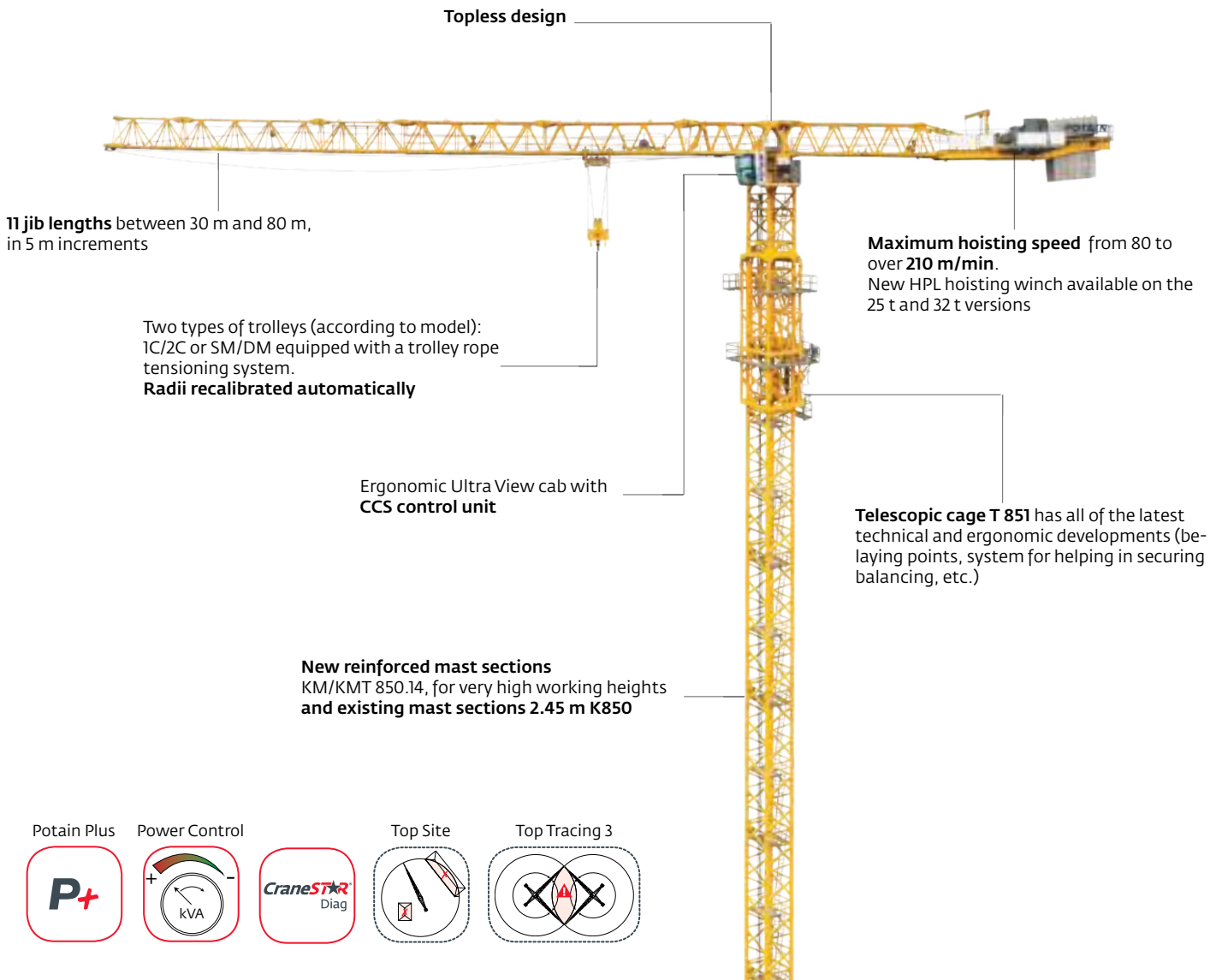
**Higher capacity.
Lower operating costs.**

Three versions available:

Max. Load: 25 t (27.6 USt), 32 t (35.3 USt) and 40 t (44.1 USt)

Max. Radius: 80 m (262 ft)

CCS control system



EXPERIENCE THE REVOLUTION AT:
WWW.MANITOWOC.COM

THE REVOLUTION IS
REAL
MANITOWOC CRANES

MDT 809



THE TOPLESS CRANE WITH THE HIGHEST CAPACITY

Developed for industrial projects and large-scale infrastructure jobs



Pre-fabricated components



Urban areas



Metro stations



Shipyards



Bridges



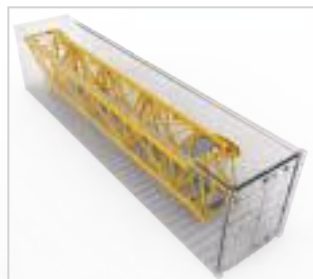
Mining sector

Groundbreaking performances for a Topless

- Specific design based on the Topless concept, with low space requirements to adapt to multi-crane jobsites
- High working heights obtained through newly developed installation bases and mast sections:
 - Reinforced fixing angles P 854A
 - Cross-shaped base ZY 854, 8 m crane footing with equivalent performance to 10 m chassis, but at a lower cost
 - Reinforced mast sections KM/KMT 850.14, 5 m and 10 m
 - Mast section fleet management optimized through reuse of standard mast section K850 2.45 m
- Integrated CCS control system
 - Ergonomic control unit for crane driver comfort and productivity
 - Greater hoisting capacities generated by the Potain Plus function
 - Driving mode customization (limiting speed, sensitivity when operating, etc.)
 - Optimized maintenance with CraneSTAR Diag to carry out remote diagnostics

Optimized and economical transport

- Compact size and limited weight of each of the crane elements:
 - Foldable counter-jib (12 m long package including the extension)
 - Towerhead and cab assembly transportable as one block
 - Jib elements packaged head to foot easily through dedicated supports
 - Foldable platforms on the jib foot
 - Cross-shaped base ZY 854 sized for a single container



- 11 convoys at the most for transportation of the whole slewing crane part with a 80 m jib.

Fastest 40 t tower crane assembly

- Simple and rapid unfolding of the ballast cage
- Wired towerhead/cab assembly fitted just once (no inter-site dismantling)
- Cathead/jib foot is single element
- Modular jib without tie bars: several configurations are possible; lighter package weights with quick and easy handling
- Cross-shaped base comprised of a main girder and 2 half cross-girders connected easily using pins
- Handling of elements in complete safety: designated sling points on each element and sling points with different forms for the handling of multiple parts (jib sections, towerhead/cab package, etc.) make lifting easier and secure
- Belaying points with specific shapes allow technicians to attach their safety harnesses easily during fitting
- Quick and easy commissioning, adjustment of safety devices done in cab on the CCS screen

